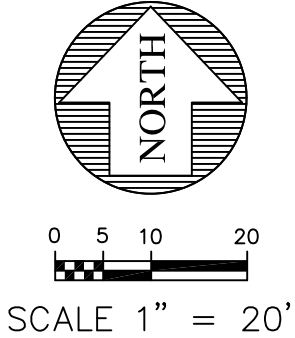
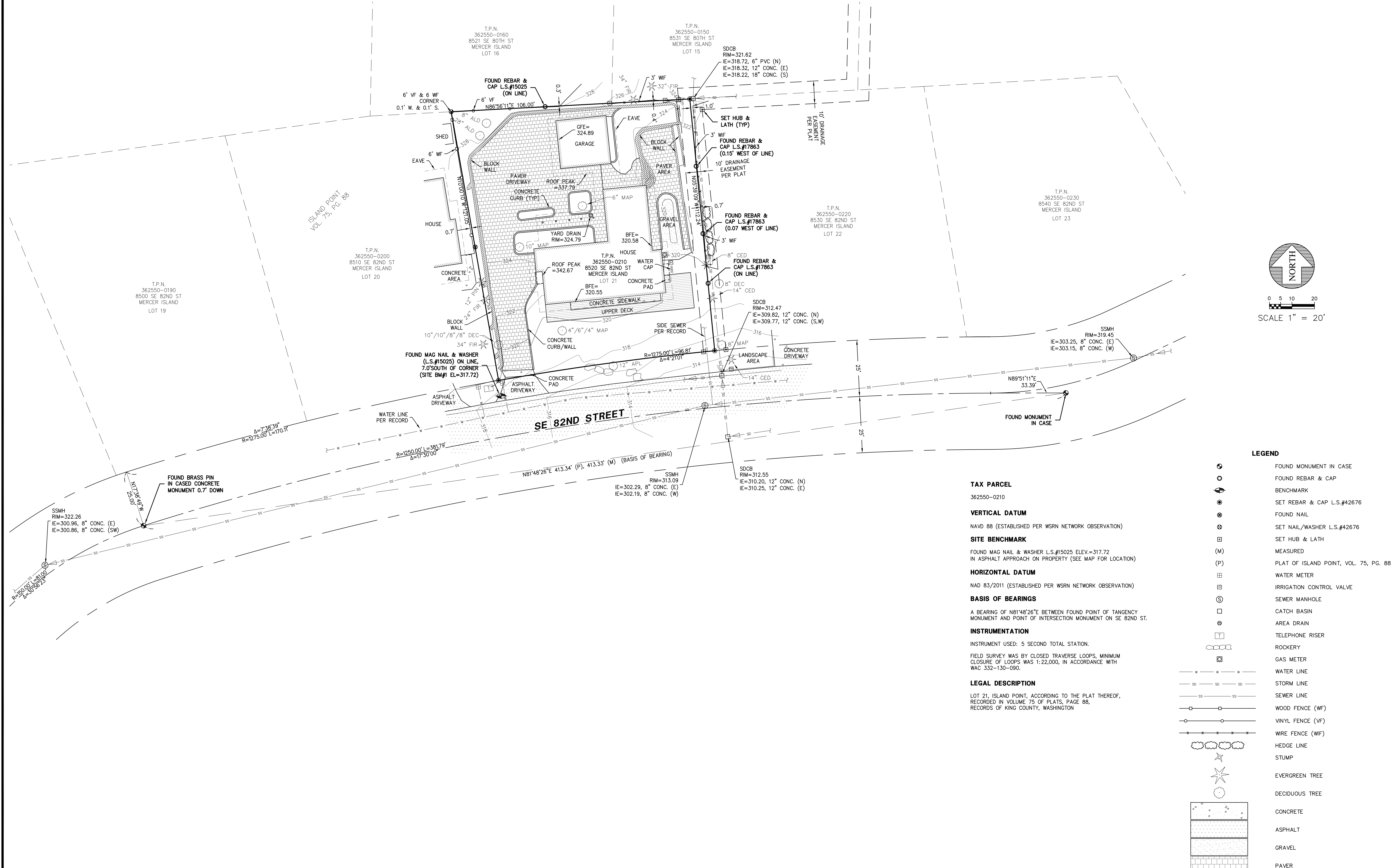


LUND TOPOGRAPHIC SURVEY

A PORTION OF THE NW 1/4 OF THE NW 1/4 OF SEC. 31, TWP 24 N., RNG 05 E., W.M.
KING COUNTY, STATE OF WASHINGTON



TAX PARCEL

362550-0210

VERTICAL DATUM

NAVD 88 (ESTABLISHED PER WSRN NETWORK OBSERVATION)

SITE BENCHMARK

FOUND MAG NAIL & WASHER L.S.#15025 ELEV=317.72
IN ASPHALT APPROACH ON PROPERTY (SEE MAP FOR LOCATION)

HORIZONTAL DATUM

NAD 83/2011 (ESTABLISHED PER WSRN NETWORK OBSERVATION)

BASIS OF BEARINGS

A BEARING OF N81°48'26"E BETWEEN FOUND POINT OF TANGENCY MONUMENT AND POINT OF INTERSECTION MONUMENT ON SE 82ND ST.

INSTRUMENTATION

INSTRUMENT USED: 5 SECOND TOTAL STATION.

FIELD SURVEY WAS BY CLOSED TRAVERSE LOOPS, MINIMUM CLOSURE OF LOOPS WAS 1:22,000, IN ACCORDANCE WITH WAC 332-130-090.

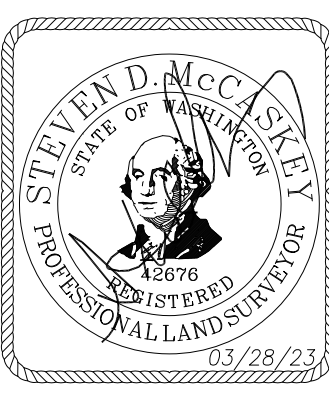
LEGAL DESCRIPTION

LOT 21, ISLAND POINT, ACCORDING TO THE PLAT THEREOF, RECORDED IN VOLUME 75 OF PLATS, PAGE 88, RECORDS OF KING COUNTY, WASHINGTON

LEGEND

- FOUND MONUMENT IN CASE
- FOUND REBAR & CAP
- BENCHMARK
- SET REBAR & CAP L.S.#42676
- FOUND NAIL
- SET NAIL/WASHER L.S.#42676
- SET HUB & LATH
- MEASURED
- PLAT OF ISLAND POINT, VOL. 75, PG. 88
- WATER METER
- IRRIGATION CONTROL VALVE
- SEWER MANHOLE
- CATCH BASIN
- AREA DRAIN
- TELEPHONE RISER
- ROCKERY
- GAS METER
- WATER LINE
- STORM LINE
- SEWER LINE
- WOOD FENCE (WF)
- VINYL FENCE (VF)
- WIRE FENCE (WIF)
- HEDGE LINE
- STUMP
- EVERGREEN TREE
- DECIDUOUS TREE
- CONCRETE
- ASPHALT
- GRAVEL
- PAVER

REVISIONS	DESCRIPTION	BY	DATE



TOPOGRAPHIC SURVEY
FOR
RENEE LUND

Encompass
ENGINEERING & SURVEYING

Western Washington Division
165 NE Juniper Street, Suite 200
Eastern Washington Division
407 Southwater Blvd. • Clk. Elm, WA 98922 • Phone: (509) 674-7433

JOB NO.	23513
DATE	03/28/23
SCALE	1" = 20'
DESIGNED	N/A
DRAWN	LFM
CHECKED	JLS
APPROVED	SDM
SHEET	1 OF 1